

Nevada County Population Projections 2021 to 2040

Prepared By:

**Matthew F. Lawton, PMP, GISP
Nevada State Demographer
Nevada Department of Taxation**

Reno Office:

**4600 Kietzke Lane, L-235, Reno, NV 89502
(Direct) (775) 687-9961
(Phone) (775) 687-9999
(Fax) (775) 688-1303
lawton@tax.state.nv.us**

Carson City Office:

**1550 College Parkway, Ste 115, Carson City, NV 89706
(Phone) (775) 684-2000
(Fax) (775) 684-2020**

Website:

http://tax.nv.gov/Publications/Population_Statistics_and_Reports/

October 1, 2021

Introduction to the 2021 Population Projections

The following is the 2021 edition of the 20-year population projections published each October by the Nevada State Demographer. The projections are prepared annually in accordance with NRS 360.289 pertaining to the annual reports of projected population of counties. The Regional Economic Models, Inc. (REMI) model v2.5 was used to project how the population might change given demographic and economic factors.

The REMI model provides information for all 17 Nevada counties by 23 major economic sectors. The model looks at the interaction between the economic and demographic characteristics within a county, as well as the dynamic economic and demographic relationships between the 17 counties and the United States as a whole. The 20-year projections are produced annually and will change as historic data becomes available or is revised. Because REMI looks at the relationship between changes in the economy and in population, it is a useful tool for looking at how changes in the structure of the population or the economy can impact each other.

The REMI model provides a standard national and regional control forecast that can be considered an “out of the box” model (the model as shipped with no additional changes from the user). In June of 2021, a macroeconomic update of the national forecast was provided by REMI for the v2.5 model and is based on The U.S. Economic Outlook for 2021-2023 from the University of Michigan’s Research Seminar in Quantitative Economics (RSQE) release on May 21, 2021, the long-term economic projections from the Congressional Budget Office (supplementing CBO’s March 2021 report “The 2021 Long-Term Budget Outlook”), and updated Bureau of Economic Analysis (BEA) employment data by NAICS sector for 2020 (revised on May 27, 2021). These two models (Standard and RSQE/CBO) were averaged to create a series of change rates that were baselined to the 2020 Governor’s Certified Series population estimate to project statewide control totals through 2040 (see Figures 1 and 2 for comparison) and identify the proportional share of the statewide population to be distributed to each county. To smooth differences in the county population proportions between the 2020 Governor’s Certified Series estimates and the REMI model projections, a wedge adjustment was applied to the projections with 95% of the county proportions weighted to the 2020 Governor’s Certified Series estimates in 2021 tapering by 5% annually to 2040 with 100% of the county proportions weighted to the REMI model (see Figure 4). This method tempered the swings in population change rates seen in the short-term projections for some counties (see Figure 3) while keeping the overall projections within the control totals and adjusting to the long-term projections forecasted by the REMI model. To account for regional commuting trends, an adjustment was applied to Carson City, Douglas, Elko, Esmeralda, Eureka, Lincoln, Lyon, Mineral, Nye, Washoe, and White Pine counties for inflow and outflow of employees based on 2018 LEHD Origin-Destination Employment Statistics (LODES) published by the U.S. Census Bureau and information provided by the Northeastern Nevada Regional Development Authority for the American Vanadium mine project expected to start production in late 2023.

These projections will be used as the control total population for the age, sex, race and Hispanic origin projections. A summary table is provided starting on Page 4, followed by the full projections by county at the end of this document.

It should be noted that the economic volatility experienced over the last 18-months may have impacts to long-term economic modeling that are yet to be understood. These effects may be especially pronounced in smaller population areas with more concentrated industry employment.

Forecast Comparison Tables

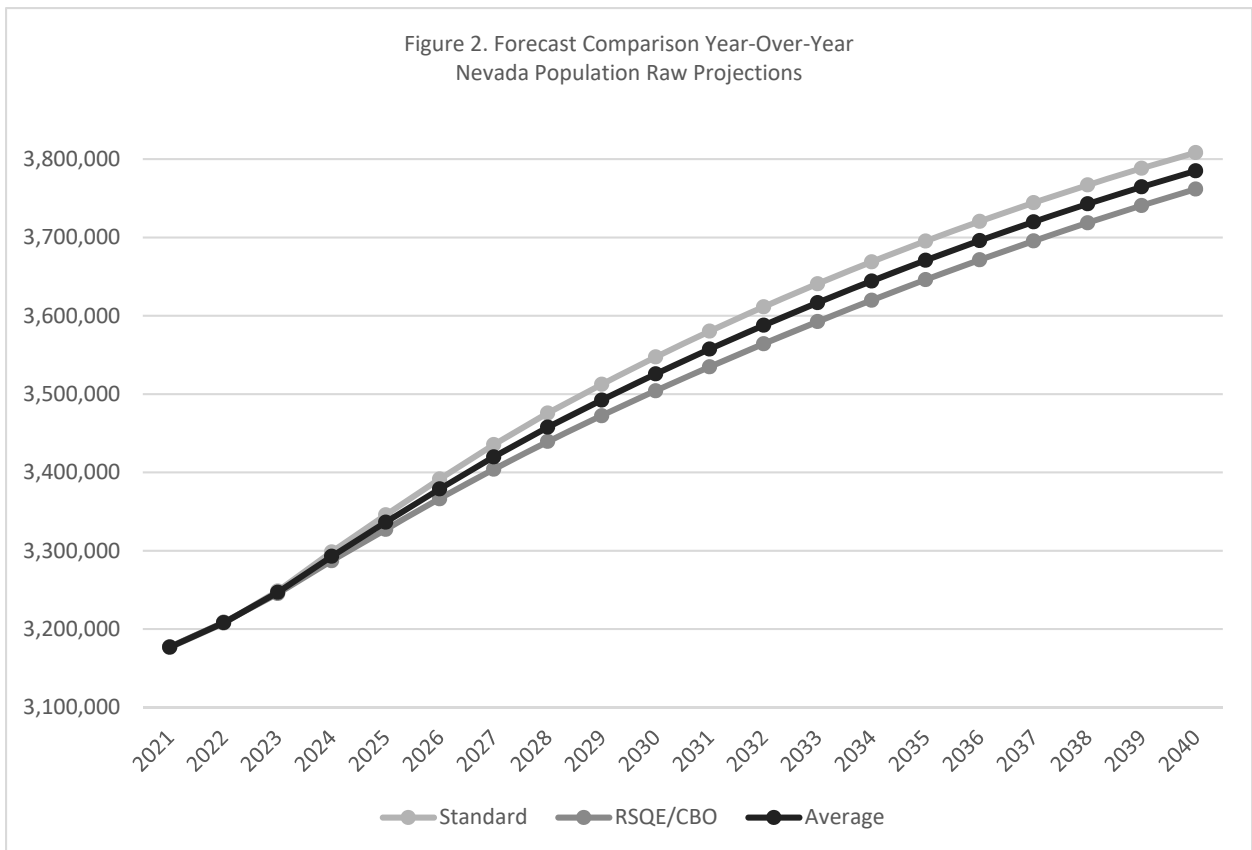
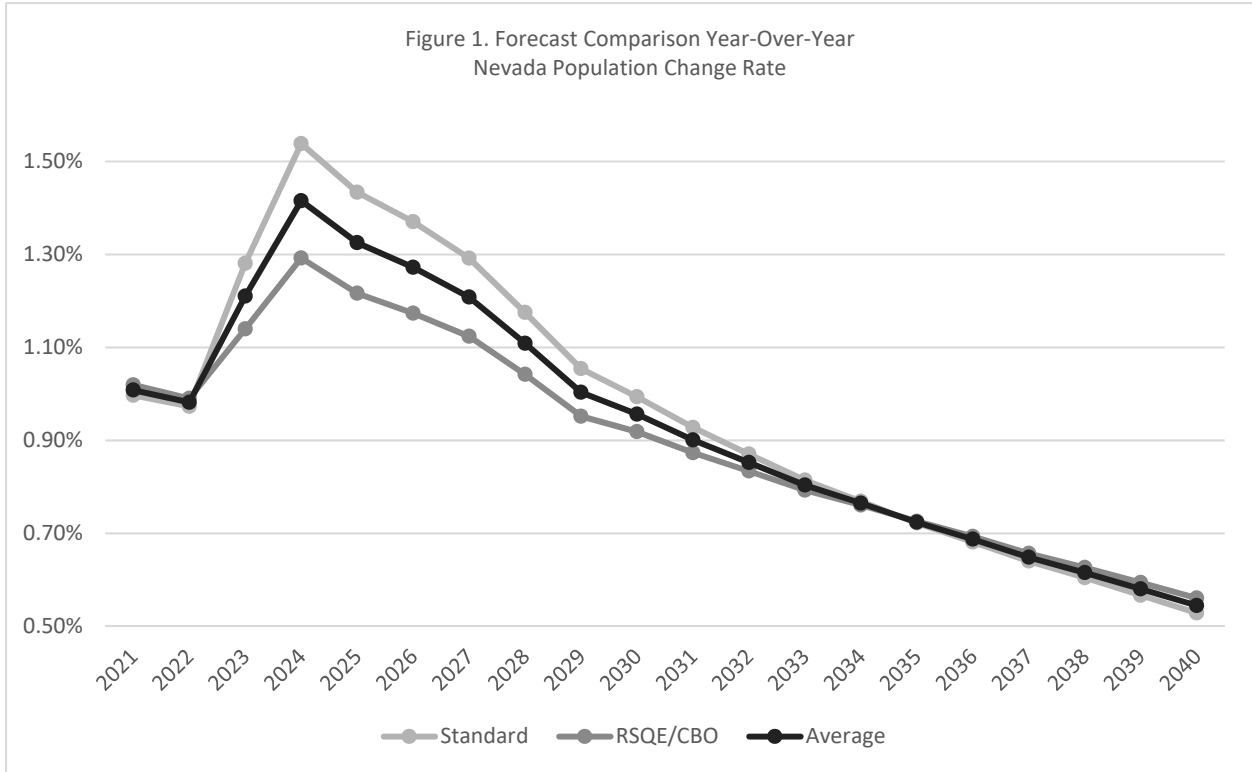


Figure 3. Forecast Comparison Year-Over-Year
17 County Population Change Rates without Wedging

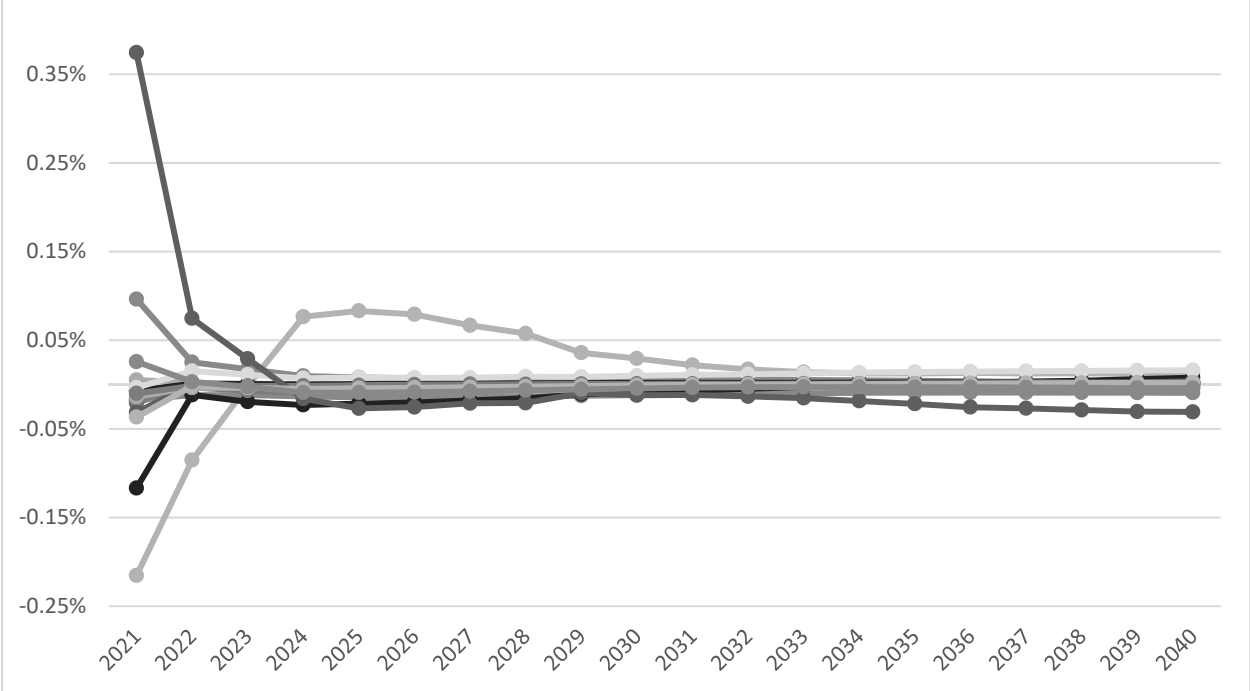
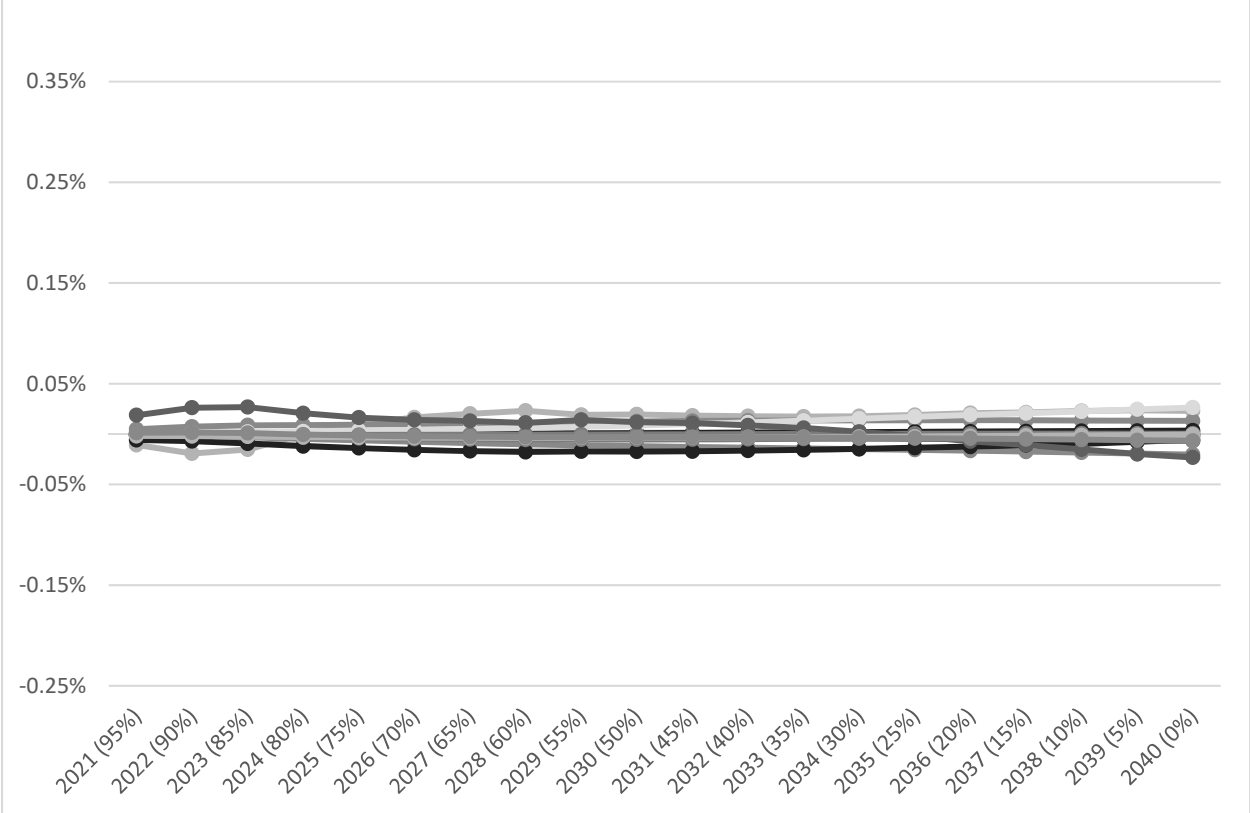


Figure 4. Forecast Comparison Year-Over-Year
17 County Population Change Rate with Wedging
(2020 Governor's Certified Series estimate weighting)



20-Year Population Projections Summary

	2020†	2021	2022	2023	2024	2025	2026
Carson City	56,434	56,693	56,953	57,264	57,609	57,922	58,215
Churchill	26,202	26,433	26,662	26,940	27,249	27,520	27,762
Clark	2,320,107	2,343,156	2,365,542	2,393,678	2,427,565	2,460,051	2,491,910
Douglas	49,082	49,293	49,484	49,709	49,962	50,173	50,352
Elko	55,435	55,857	56,230	56,585	57,056	57,405	57,657
Esmeralda	999	1,000	1,001	1,001	1,002	1,001	998
Eureka	1,936	1,937	1,939	1,995	1,997	1,999	2,002
Humboldt	17,064	17,208	17,338	17,480	17,620	17,721	17,788
Lander	6,324	6,338	6,351	6,368	6,382	6,383	6,372
Lincoln	5,293	5,320	5,339	5,358	5,377	5,386	5,387
Lyon	57,629	58,063	58,540	59,129	59,804	60,470	61,138
Mineral	4,896	4,914	4,934	4,960	4,991	5,021	5,053
Nye	48,414	48,934	49,489	50,200	51,038	51,868	52,701
Pershing	6,983	7,031	7,070	7,112	7,153	7,180	7,192
Storey	4,304	4,331	4,353	4,380	4,412	4,439	4,469
Washoe	473,606	479,882	486,337	494,175	503,050	511,348	519,337
White Pine	10,477	10,503	10,524	10,578	10,605	10,620	10,627
State Total*	3,145,184	3,176,894	3,208,084	3,246,914	3,292,872	3,336,509	3,378,958

	2027	2028	2029	2030	2031	2032	2033
Carson City	58,486	58,731	58,947	59,153	59,346	59,528	59,694
Churchill	27,980	28,162	28,310	28,438	28,547	28,639	28,715
Clark	2,522,706	2,551,479	2,577,747	2,603,089	2,627,188	2,650,218	2,672,148
Douglas	50,496	50,598	50,659	50,694	50,702	50,665	50,573
Elko	57,823	57,903	57,938	57,942	57,918	57,895	57,870
Esmeralda	992	985	977	967	958	950	941
Eureka	2,004	2,006	2,009	2,012	2,015	2,018	2,022
Humboldt	17,828	17,836	17,827	17,806	17,779	17,752	17,726
Lander	6,353	6,325	6,291	6,256	6,214	6,173	6,129
Lincoln	5,378	5,356	5,322	5,279	5,227	5,169	5,103
Lyon	61,803	62,455	63,085	63,723	64,359	64,990	65,611
Mineral	5,086	5,120	5,157	5,197	5,241	5,289	5,340
Nye	53,541	54,384	55,210	56,078	56,981	57,925	58,925
Pershing	7,192	7,180	7,157	7,129	7,096	7,059	7,018
Storey	4,502	4,531	4,560	4,593	4,628	4,666	4,707
Washoe	526,985	534,036	540,605	546,868	552,804	558,419	563,691
White Pine	10,626	10,612	10,591	10,568	10,547	10,521	10,500
State Total*	3,419,781	3,457,699	3,492,391	3,525,793	3,557,551	3,587,875	3,616,713

*Totals may not sum precisely due to rounding

†2020 Governor's Certified Series Population Estimates

20-Year Population Projections Summary (cont'd)

	2034	2035	2036	2037	2038	2039	2040
Carson City	59,845	59,979	60,100	60,201	60,284	60,346	60,391
Churchill	28,771	28,807	28,818	28,806	28,768	28,700	28,597
Clark	2,693,238	2,713,431	2,732,848	2,751,372	2,769,166	2,786,130	2,802,178
Douglas	50,436	50,243	49,994	49,682	49,314	48,883	48,388
Elko	57,860	57,870	57,903	57,976	58,086	58,262	58,521
Esmeralda	932	923	915	907	899	891	885
Eureka	2,026	2,031	2,035	2,040	2,046	2,052	2,058
Humboldt	17,708	17,696	17,701	17,720	17,761	17,822	17,908
Lander	6,087	6,046	6,011	5,980	5,958	5,946	5,946
Lincoln	5,031	4,954	4,871	4,781	4,686	4,585	4,481
Lyon	66,229	66,836	67,435	68,020	68,591	69,147	69,687
Mineral	5,396	5,456	5,521	5,589	5,662	5,739	5,820
Nye	59,986	61,108	62,294	63,536	64,841	66,219	67,656
Pershing	6,975	6,933	6,891	6,852	6,814	6,780	6,753
Storey	4,750	4,795	4,843	4,892	4,939	4,986	5,030
Washoe	568,629	573,186	577,348	581,142	584,571	587,604	590,280
White Pine	10,482	10,470	10,468	10,471	10,480	10,495	10,517
State Total*	3,644,380	3,670,764	3,695,994	3,719,966	3,742,864	3,764,587	3,785,099

*Totals may not sum precisely due to rounding

†2020 Governor's Certified Series Population Estimates

20-Year Population Projections: Carson City

Year	Population	Change Amt	Change %
2020†	56,434		
2021	56,693	259	0.5%
2022	56,953	260	0.5%
2023	57,264	311	0.5%
2024	57,609	345	0.6%
2025	57,922	313	0.5%
2026	58,215	293	0.5%
2027	58,486	271	0.5%
2028	58,731	245	0.4%
2029	58,947	216	0.4%
2030	59,153	206	0.3%
2031	59,346	193	0.3%
2032	59,528	182	0.3%
2033	59,694	166	0.3%
2034	59,845	151	0.3%
2035	59,979	134	0.2%
2036	60,100	121	0.2%
2037	60,201	101	0.2%
2038	60,284	83	0.1%
2039	60,346	62	0.1%
2040	60,391	45	0.1%

20-Year Population Projections: Churchill County

Year	Population	Change Amt	Change %
2020†	26,202		
2021	26,433	231	0.9%
2022	26,662	229	0.9%
2023	26,940	278	1.0%
2024	27,249	309	1.1%
2025	27,520	271	1.0%
2026	27,762	242	0.9%
2027	27,980	218	0.8%
2028	28,162	182	0.7%
2029	28,310	148	0.5%
2030	28,438	128	0.5%
2031	28,547	109	0.4%
2032	28,639	92	0.3%
2033	28,715	76	0.3%
2034	28,771	56	0.2%
2035	28,807	36	0.1%
2036	28,818	11	0.0%
2037	28,806	-12	0.0%
2038	28,768	-38	-0.1%
2039	28,700	-68	-0.2%
2040	28,597	-103	-0.4%

20-Year Population Projections: Clark County

Year	Population	Change Amt	Change %
2020†	2,320,107		
2021	2,343,156	23,049	1.0%
2022	2,365,542	22,386	1.0%
2023	2,393,678	28,136	1.2%
2024	2,427,565	33,887	1.4%
2025	2,460,051	32,486	1.3%
2026	2,491,910	31,859	1.3%
2027	2,522,706	30,796	1.2%
2028	2,551,479	28,773	1.1%
2029	2,577,747	26,268	1.0%
2030	2,603,089	25,342	1.0%
2031	2,627,188	24,099	0.9%
2032	2,650,218	23,030	0.9%
2033	2,672,148	21,930	0.8%
2034	2,693,238	21,090	0.8%
2035	2,713,431	20,193	0.7%
2036	2,732,848	19,417	0.7%
2037	2,751,372	18,524	0.7%
2038	2,769,166	17,794	0.6%
2039	2,786,130	16,964	0.6%
2040	2,802,178	16,048	0.6%

20-Year Population Projections: Douglas County

Year	Population	Change Amt	Change %
2020†	49,082		
2021	49,293	211	0.4%
2022	49,484	191	0.4%
2023	49,709	225	0.5%
2024	49,962	253	0.5%
2025	50,173	211	0.4%
2026	50,352	179	0.4%
2027	50,496	144	0.3%
2028	50,598	102	0.2%
2029	50,659	61	0.1%
2030	50,694	35	0.1%
2031	50,702	8	0.0%
2032	50,665	-37	-0.1%
2033	50,573	-92	-0.2%
2034	50,436	-137	-0.3%
2035	50,243	-193	-0.4%
2036	49,994	-249	-0.5%
2037	49,682	-312	-0.6%
2038	49,314	-368	-0.7%
2039	48,883	-431	-0.9%
2040	48,388	-495	-1.0%

†2020 Governor's Certified Series Population Estimates

20-Year Population Projections: Elko County

Year	Population	Change Amt	Change %
2020†	55,435		
2021	55,857	422	0.8%
2022	56,230	373	0.7%
2023	56,585	355	0.6%
2024	57,056	471	0.8%
2025	57,405	349	0.6%
2026	57,657	252	0.4%
2027	57,823	166	0.3%
2028	57,903	80	0.1%
2029	57,938	35	0.1%
2030	57,942	4	0.0%
2031	57,918	-24	0.0%
2032	57,895	-23	0.0%
2033	57,870	-25	0.0%
2034	57,860	-10	0.0%
2035	57,870	10	0.0%
2036	57,903	33	0.1%
2037	57,976	73	0.1%
2038	58,086	110	0.2%
2039	58,262	176	0.3%
2040	58,521	259	0.4%

20-Year Population Projections: Esmeralda County

Year	Population	Change Amt	Change %
2020†	999		
2021	1,000	1	0.1%
2022	1,001	1	0.1%
2023	1,001	0	0.0%
2024	1,002	1	0.1%
2025	1,001	-1	-0.1%
2026	998	-3	-0.3%
2027	992	-6	-0.6%
2028	985	-7	-0.7%
2029	977	-8	-0.8%
2030	967	-10	-1.0%
2031	958	-9	-0.9%
2032	950	-8	-0.8%
2033	941	-9	-0.9%
2034	932	-9	-1.0%
2035	923	-9	-1.0%
2036	915	-8	-0.9%
2037	907	-8	-0.9%
2038	899	-8	-0.9%
2039	891	-8	-0.9%
2040	885	-6	-0.7%

20-Year Population Projections: Eureka County

Year	Population	Change Amt	Change %
2020†	1,936		
2021	1,937	1	0.1%
2022	1,939	2	0.1%
2023	1,995	56	2.9%
2024	1,997	2	0.1%
2025	1,999	2	0.1%
2026	2,002	3	0.2%
2027	2,004	2	0.1%
2028	2,006	2	0.1%
2029	2,009	3	0.1%
2030	2,012	3	0.1%
2031	2,015	3	0.1%
2032	2,018	3	0.1%
2033	2,022	4	0.2%
2034	2,026	4	0.2%
2035	2,031	5	0.2%
2036	2,035	4	0.2%
2037	2,040	5	0.2%
2038	2,046	6	0.3%
2039	2,052	6	0.3%
2040	2,058	6	0.3%

20-Year Population Projections: Humboldt County

Year	Population	Change Amt	Change %
2020†	17,064		
2021	17,208	144	0.8%
2022	17,338	130	0.8%
2023	17,480	142	0.8%
2024	17,620	140	0.8%
2025	17,721	101	0.6%
2026	17,788	67	0.4%
2027	17,828	40	0.2%
2028	17,836	8	0.0%
2029	17,827	-9	-0.1%
2030	17,806	-21	-0.1%
2031	17,779	-27	-0.2%
2032	17,752	-27	-0.2%
2033	17,726	-26	-0.1%
2034	17,708	-18	-0.1%
2035	17,696	-12	-0.1%
2036	17,701	5	0.0%
2037	17,720	19	0.1%
2038	17,761	41	0.2%
2039	17,822	61	0.3%
2040	17,908	86	0.5%

†2020 Governor's Certified Series Population Estimates

20-Year Population Projections: Lander County

Year	Population	Change Amt	Change %
2020†	6,324		
2021	6,338	14	0.2%
2022	6,351	13	0.2%
2023	6,368	17	0.3%
2024	6,382	14	0.2%
2025	6,383	1	0.0%
2026	6,372	-11	-0.2%
2027	6,353	-19	-0.3%
2028	6,325	-28	-0.4%
2029	6,291	-34	-0.5%
2030	6,256	-35	-0.6%
2031	6,214	-42	-0.7%
2032	6,173	-41	-0.7%
2033	6,129	-44	-0.7%
2034	6,087	-42	-0.7%
2035	6,046	-41	-0.7%
2036	6,011	-35	-0.6%
2037	5,980	-31	-0.5%
2038	5,958	-22	-0.4%
2039	5,946	-12	-0.2%
2040	5,946	0	0.0%

20-Year Population Projections: Lincoln County

Year	Population	Change Amt	Change %
2020†	5,293		
2021	5,320	27	0.5%
2022	5,339	19	0.4%
2023	5,358	19	0.4%
2024	5,377	19	0.4%
2025	5,386	9	0.2%
2026	5,387	1	0.0%
2027	5,378	-9	-0.2%
2028	5,356	-22	-0.4%
2029	5,322	-34	-0.6%
2030	5,279	-43	-0.8%
2031	5,227	-52	-1.0%
2032	5,169	-58	-1.1%
2033	5,103	-66	-1.3%
2034	5,031	-72	-1.4%
2035	4,954	-77	-1.5%
2036	4,871	-83	-1.7%
2037	4,781	-90	-1.8%
2038	4,686	-95	-2.0%
2039	4,585	-101	-2.2%
2040	4,481	-104	-2.3%

20-Year Population Projections: Lyon County

Year	Population	Change Amt	Change %
2020†	57,629		
2021	58,063	434	0.8%
2022	58,540	477	0.8%
2023	59,129	589	1.0%
2024	59,804	675	1.1%
2025	60,470	666	1.1%
2026	61,138	668	1.1%
2027	61,803	665	1.1%
2028	62,455	652	1.1%
2029	63,085	630	1.0%
2030	63,723	638	1.0%
2031	64,359	636	1.0%
2032	64,990	631	1.0%
2033	65,611	621	1.0%
2034	66,229	618	0.9%
2035	66,836	607	0.9%
2036	67,435	599	0.9%
2037	68,020	585	0.9%
2038	68,591	571	0.8%
2039	69,147	556	0.8%
2040	69,687	540	0.8%

20-Year Population Projections: Mineral County

Year	Population	Change Amt	Change %
2020†	4,896		
2021	4,914	18	0.4%
2022	4,934	20	0.4%
2023	4,960	26	0.5%
2024	4,991	31	0.6%
2025	5,021	30	0.6%
2026	5,053	32	0.6%
2027	5,086	33	0.7%
2028	5,120	34	0.7%
2029	5,157	37	0.7%
2030	5,197	40	0.8%
2031	5,241	44	0.8%
2032	5,289	48	0.9%
2033	5,340	51	1.0%
2034	5,396	56	1.0%
2035	5,456	60	1.1%
2036	5,521	65	1.2%
2037	5,589	68	1.2%
2038	5,662	73	1.3%
2039	5,739	77	1.4%
2040	5,820	81	1.4%

†2020 Governor's Certified Series Population Estimates

20-Year Population Projections: Nye County

Year	Population	Change Amt	Change %
2020†	48,414		
2021	48,934	520	1.1%
2022	49,489	555	1.1%
2023	50,200	711	1.4%
2024	51,038	838	1.7%
2025	51,868	830	1.6%
2026	52,701	833	1.6%
2027	53,541	840	1.6%
2028	54,384	843	1.6%
2029	55,210	826	1.5%
2030	56,078	868	1.6%
2031	56,981	903	1.6%
2032	57,925	944	1.7%
2033	58,925	1,000	1.7%
2034	59,986	1,061	1.8%
2035	61,108	1,122	1.9%
2036	62,294	1,186	1.9%
2037	63,536	1,242	2.0%
2038	64,841	1,305	2.1%
2039	66,219	1,378	2.1%
2040	67,656	1,437	2.2%

20-Year Population Projections: Pershing County

Year	Population	Change Amt	Change %
2020†	6,983		
2021	7,031	48	0.7%
2022	7,070	39	0.6%
2023	7,112	42	0.6%
2024	7,153	41	0.6%
2025	7,180	27	0.4%
2026	7,192	12	0.2%
2027	7,192	0	0.0%
2028	7,180	-12	-0.2%
2029	7,157	-23	-0.3%
2030	7,129	-28	-0.4%
2031	7,096	-33	-0.5%
2032	7,059	-37	-0.5%
2033	7,018	-41	-0.6%
2034	6,975	-43	-0.6%
2035	6,933	-42	-0.6%
2036	6,891	-42	-0.6%
2037	6,852	-39	-0.6%
2038	6,814	-38	-0.6%
2039	6,780	-34	-0.5%
2040	6,753	-27	-0.4%

20-Year Population Projections: Storey County

Year	Population	Change Amt	Change %
2020†	4,304		
2021	4,331	27	0.6%
2022	4,353	22	0.5%
2023	4,380	27	0.6%
2024	4,412	32	0.7%
2025	4,439	27	0.6%
2026	4,469	30	0.7%
2027	4,502	33	0.7%
2028	4,531	29	0.6%
2029	4,560	29	0.6%
2030	4,593	33	0.7%
2031	4,628	35	0.8%
2032	4,666	38	0.8%
2033	4,707	41	0.9%
2034	4,750	43	0.9%
2035	4,795	45	0.9%
2036	4,843	48	1.0%
2037	4,892	49	1.0%
2038	4,939	47	1.0%
2039	4,986	47	1.0%
2040	5,030	44	0.9%

20-Year Population Projections: Washoe County

Year	Population	Change Amt	Change %
2020†	473,606		
2021	479,882	6,276	1.3%
2022	486,337	6,455	1.3%
2023	494,175	7,838	1.6%
2024	503,050	8,875	1.8%
2025	511,348	8,298	1.6%
2026	519,337	7,989	1.6%
2027	526,985	7,648	1.5%
2028	534,036	7,051	1.3%
2029	540,605	6,569	1.2%
2030	546,868	6,263	1.2%
2031	552,804	5,936	1.1%
2032	558,419	5,615	1.0%
2033	563,691	5,272	0.9%
2034	568,629	4,938	0.9%
2035	573,186	4,557	0.8%
2036	577,348	4,162	0.7%
2037	581,142	3,794	0.7%
2038	584,571	3,429	0.6%
2039	587,604	3,033	0.5%
2040	590,280	2,676	0.5%

†2020 Governor's Certified Series Population Estimates

20-Year Population Projections: White Pine County

Year	Population	Change Amt	Change %
2020†	10,477		
2021	10,503	26	0.2%
2022	10,524	21	0.2%
2023	10,578	54	0.5%
2024	10,605	27	0.3%
2025	10,620	15	0.1%
2026	10,627	7	0.1%
2027	10,626	-1	0.0%
2028	10,612	-14	-0.1%
2029	10,591	-21	-0.2%
2030	10,568	-23	-0.2%
2031	10,547	-21	-0.2%
2032	10,521	-26	-0.2%
2033	10,500	-21	-0.2%
2034	10,482	-18	-0.2%
2035	10,470	-12	-0.1%
2036	10,468	-2	0.0%
2037	10,471	3	0.0%
2038	10,480	9	0.1%
2039	10,495	15	0.1%
2040	10,517	22	0.2%

20-Year Population Projections: State Total

Year	Population	Change Amt	Change %
2020†	3,145,184		
2021	3,176,894	31,710	1.0%
2022	3,208,084	31,190	1.0%
2023	3,246,914	38,830	1.2%
2024	3,292,872	45,958	1.4%
2025	3,336,509	43,637	1.3%
2026	3,378,958	42,449	1.3%
2027	3,419,781	40,823	1.2%
2028	3,457,699	37,918	1.1%
2029	3,492,391	34,692	1.0%
2030	3,525,793	33,402	1.0%
2031	3,557,551	31,758	0.9%
2032	3,587,875	30,324	0.9%
2033	3,616,713	28,838	0.8%
2034	3,644,380	27,667	0.8%
2035	3,670,764	26,384	0.7%
2036	3,695,994	25,230	0.7%
2037	3,719,966	23,972	0.6%
2038	3,742,864	22,898	0.6%
2039	3,764,587	21,723	0.6%
2040	3,785,099	20,512	0.5%

†2020 Governor's Certified Series Population Estimates